



Clinical Guidelines: **FROM THE BENCH**

by Robert Marbach, BA, CDT • President, Authentic Dental Lab

AUTHENTIC
DENTAL LABORATORY, INC.

How to Achieve Great Impressions Every Time.

Great Impressions Have The Following:

1. Use a rigid, sturdy dual-arch tray with a wide arch and low side-walls (Figure 1a, 1b).
2. Thoroughly apply the correct tray adhesive for your impression material (Figure 2).
3. When loading the tray make sure to use sufficient material to cover the side walls of the tray (Figure 3).
4. Make sure the wash and base impression material are compatible.
5. Always rinse hemostatics and monomers off the prep before impressing.
6. Make sure the patient maintains a closed centric position during the entire set time of the impression material (Figure 4).
7. Never cut short the manufactures set-time of your impression material. Always use a timer (Figure 5).
8. Make sure your disinfection solutions are compatible with your impression material.
9. Never reline an impression. Start over if not acceptable.
10. Tray show through. Don't let the patient impinge on the distal bar or side walls of the tray (Figure 6).
11. Syringe wash material starting in the sulcus and completely covering the prep without voids or bubbles (Figure 7).
12. Always pack cord if you cannot visually see tooth structure apical to the margin (Figure 8).
13. Make sure the prep is smooth and rounded with no sharp line angles.
14. Always inspect your impression for detailed margins with no tears, pulls, voids, or rough surfaces (Figure 9).



Figure 1a: Low side walls.



Figure 1b: Wide arch.



Figure 2: Tray adhesive.



Figure 3: Cover the side walls.



Figure 4: Maintain centric position.



Figure 5: Use a timer.

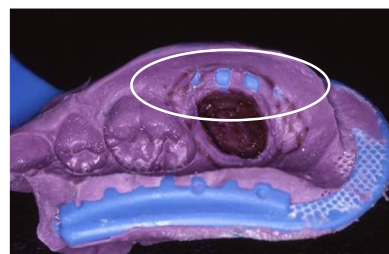


Figure 6: Tray show through.

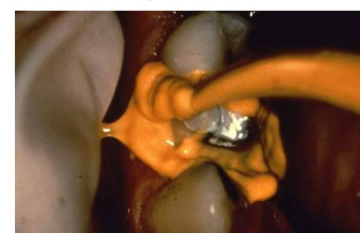


Figure 7: Proper syringing



Figure 8: Pack cord.



Figure 9: Inspect your impression.

Dual Cord Technique To Achieve Great Margins:

To achieve that ideal margin, it is recommended to utilize the two cord packing technique. Starting with a #00 cord placed in the sulcus and then a #1 cord placed over the first cord. When the tissue is retracted and stable, remove the second cord leaving the first cord remaining in the sulcus with the margin visibly exposed. Rinse hemostatic off the prep. Syringe impression material over the margin and entire prep area. Then place filled impression tray.

Tip- Using a heavy body VPS impression material and a light body wash, the impression becomes dimensionally accurate and stable.

---Please visit our website: www.authenticlab.com to view our clinic video on cord placement---